



*Find your way here*

# Fall 2020 Online, Graduate, International & Retention Enrollment Update

Jim Coleman, Provost & Executive Vice Chancellor

Karen Bull, Dean, UNCG Online

Kelly Burke, Vice Provost & Dean, The Graduate School

Maria Anastasiou, Associate Provost for International Programs

Andrew Hamilton, Associate Vice Provost for Student Success & Dean of  
Undergraduate Studies



Find your way here

# Total Enrollment

Student Category	Fall 2019 Census	Fall 2020 Census	Difference
New Undergraduate Enrollment	5472	4866	-606 (-11%)
Continuing Enrollment Enrollment *	11,065	11,097	32 (.02)
<b>Total Undergraduate</b>	<b>16,537</b>	<b>15,963</b>	<b>-574 (-3.5%)</b>
New Graduate Enrollment	1,265	1,494	229 (18%)
Continuing Graduate Enrollment	2,350	2275	-75 (-.03%)
<b>Total Graduate</b>	<b>3,615</b>	<b>3769</b>	<b>154 (4.3%)</b>
<b>TOTAL ENROLLMENT</b>	<b>20,196</b>	<b>19,764</b>	<b>-432 (-2.1%)</b>

\* Record first time, full time Freshman retention at 80.5%, up over 5% from last year



# Karen Bull

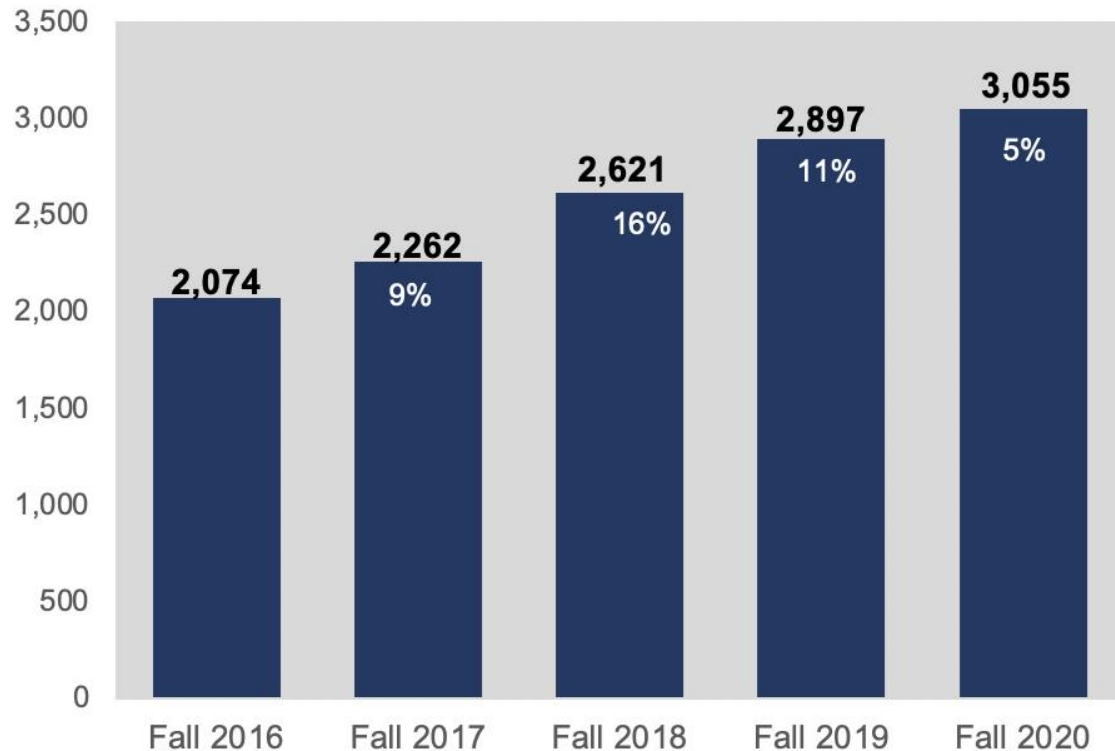
## Dean of Division Online Learning



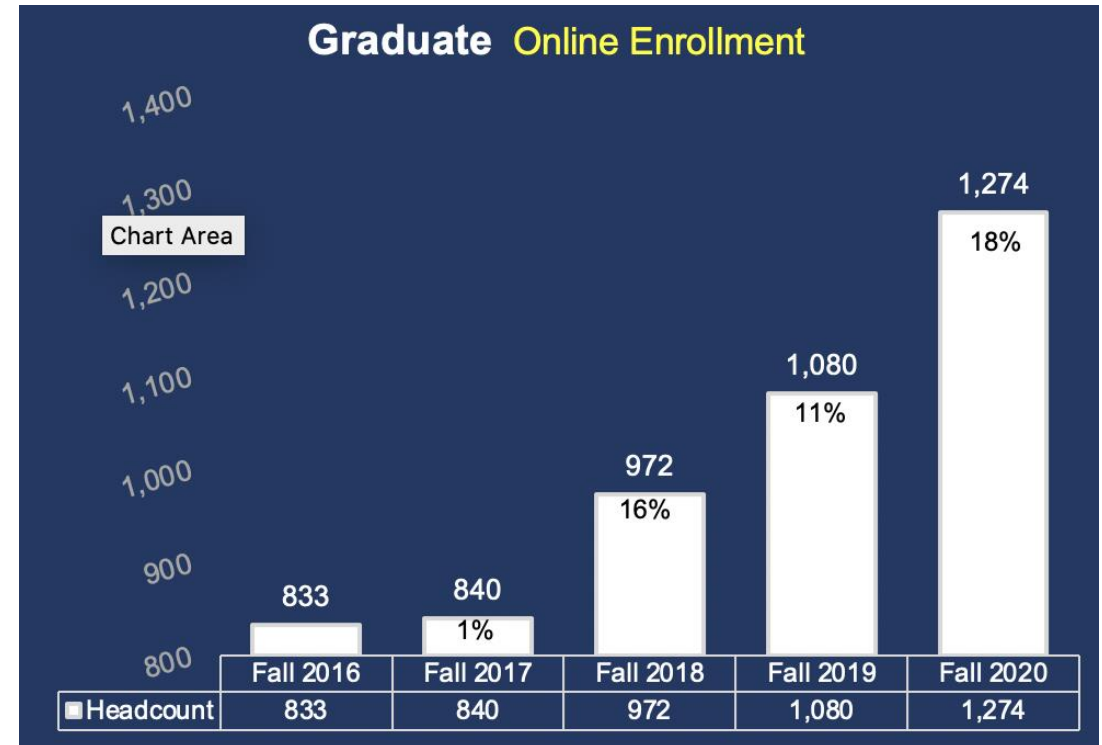
Find your way here

# Online Student Enrollment

**TOTAL Online Enrollment**



**Graduate Online Enrollment**





Find your way here

# UNCG Online 2020

Alternative, Stackable & Microcredentials



Where are we headed?

- Key Focus
  - Stackable Credentials
  - Market Analysis
  - Corporate Partnerships
- Key Services
  - Online Student Success Model
  - Online Program Health Reports



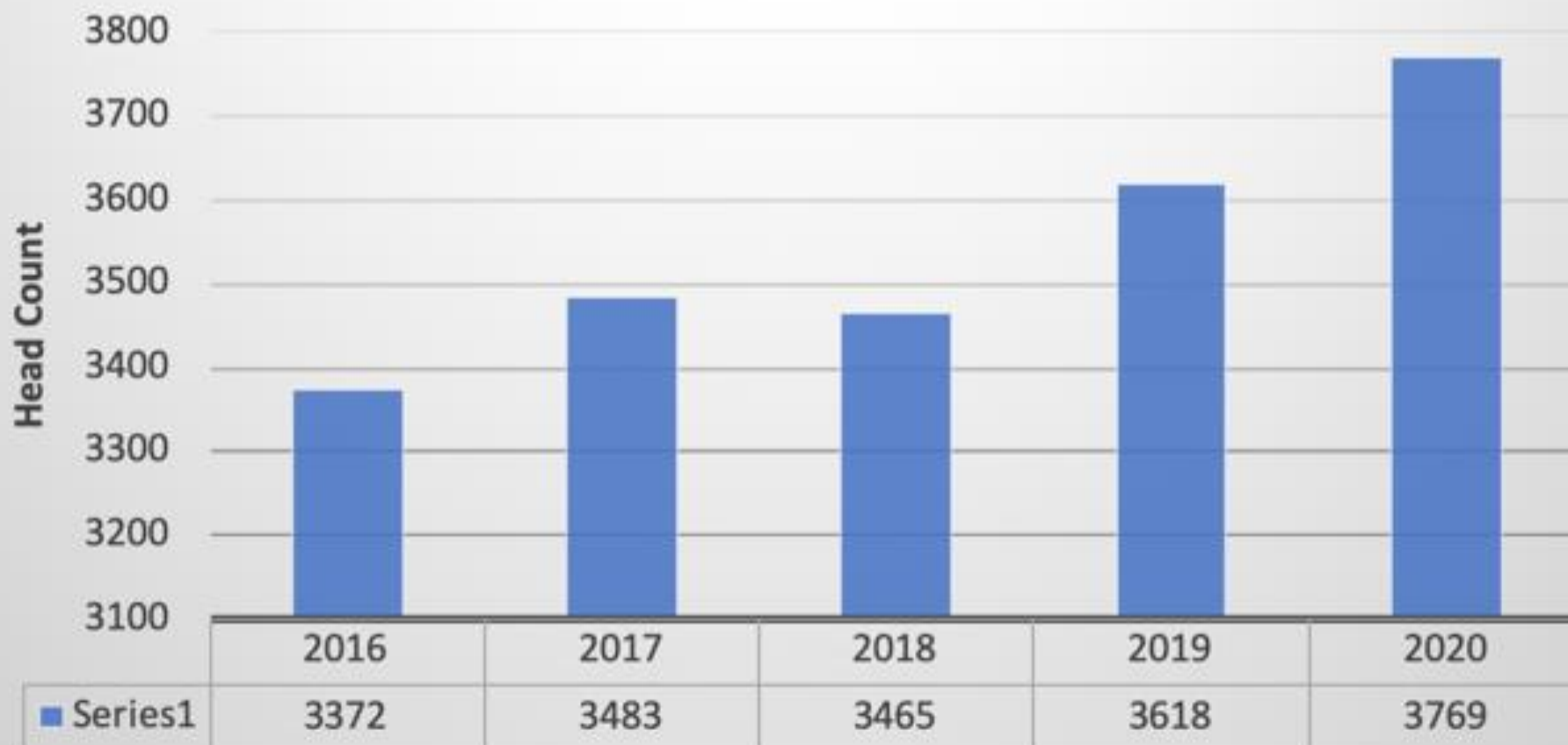
*Find your way here*

Kelly Burke  
Vice Provost &  
Dean of the Graduate School



# Graduate Total Enrollment

11.7 % increase over five years





# 2020 New Graduate Programs

## New Programs

- **MS Sustainability (O)**
- **MED Instructional Technology (O)**
- **MA Economics (O)**
- **MS Applied Statistics (G)**

## New Certificates – Online

- **Economics/Health Analytics**
- **Quantitative Business Economics**
- **Taxation**
- **Health and Wellness Coaching**
- **Workplace Wellness**





*Find your way here*

# 2020-21 Graduate School Initiatives

PhD in Computer Science (pending System approval)

Interdisciplinary College as incubator for new ideas and administering programs that cross multiple established disciplines

## Partnering with Online Learning

- eSports – Certificate
- Speech & Pathology – Explore Move Online
- Artificial Intelligence – Explore New Online
- Justice Studies - Certificate
- Micro-Credentials & Stackable Credentials

# What are Micro-Credentials?



Capstone?

Certificate?



Badge?





*Find your way here*

# Maria Anastasiou

Associate Provost for International  
Programs

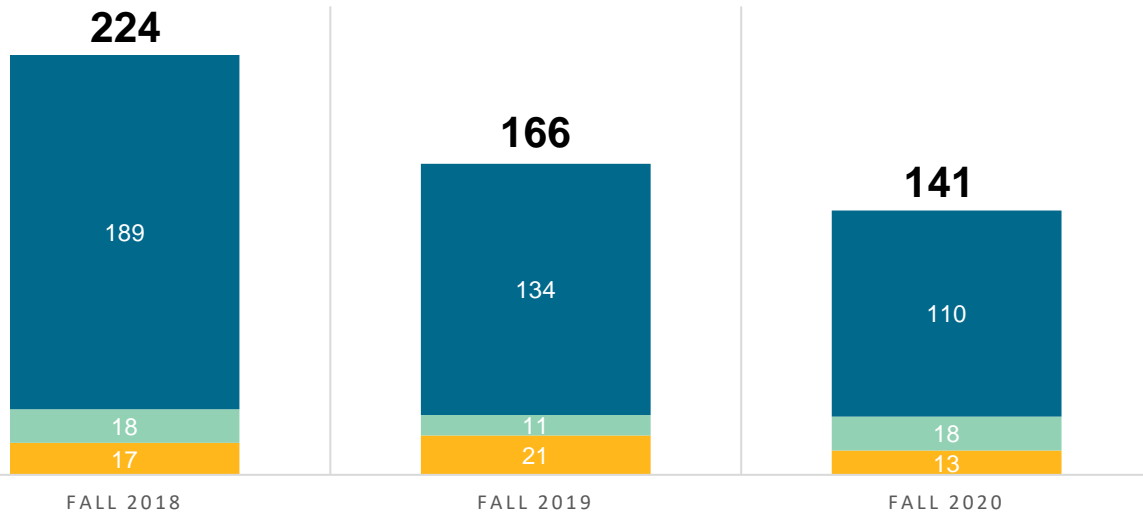


Find your way here

# International Student Enrollment and Retention

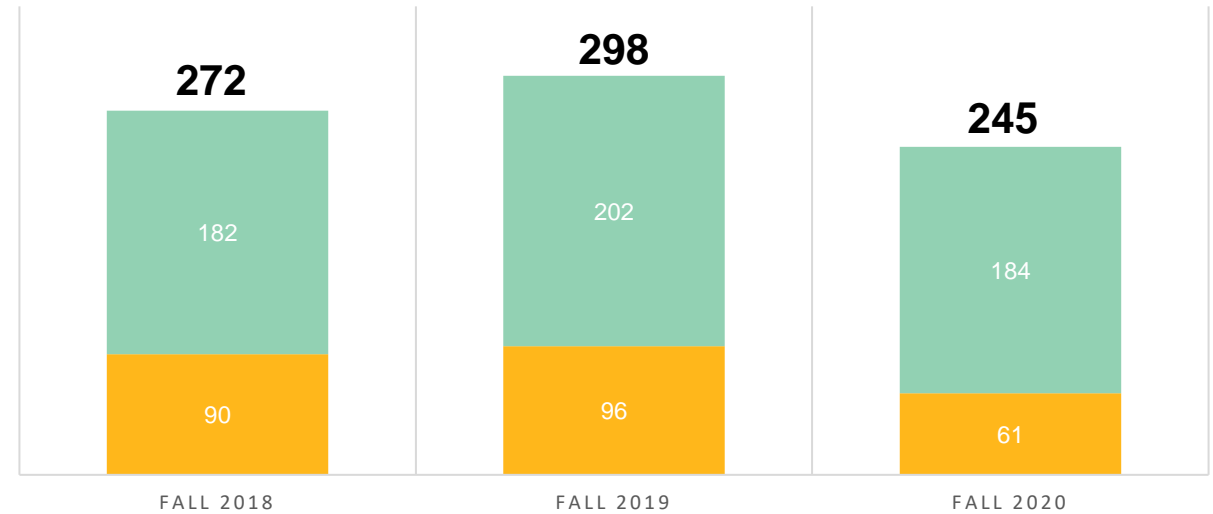
## UNDERGRADUATE

■ NEW ■ TRANSFER ■ CONTINUING



## GRADUATE

■ NEW ■ CONTINUING



- High retention rates (90% - 95%)
- Numbers are in line with national trends
- Major factors affecting recruitment: US immigration policies, increased global competition for international students, decreased interest in traditional English language programs, COVID-19



*Find your way here*

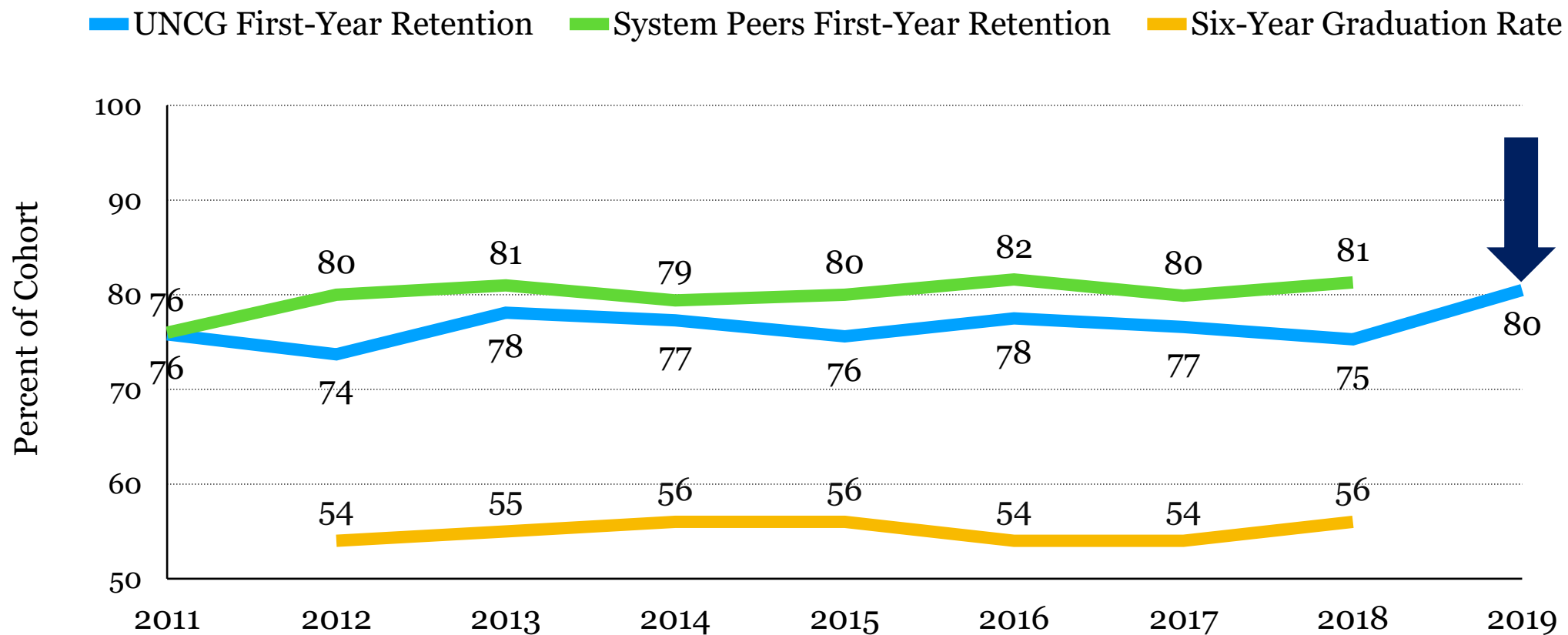
# Andrew Hamilton Associate Vice Provost & Dean of Undergraduate Studies

1. A Challenge
2. A Strategy
3. Next Steps



Find your way here

# Student Persistence/Retention





Find your way here

We can do *a lot* better.

**90%** First-Year Retention

**80%** Retention to the Junior Year

**70%** Six-Year Graduation Rate



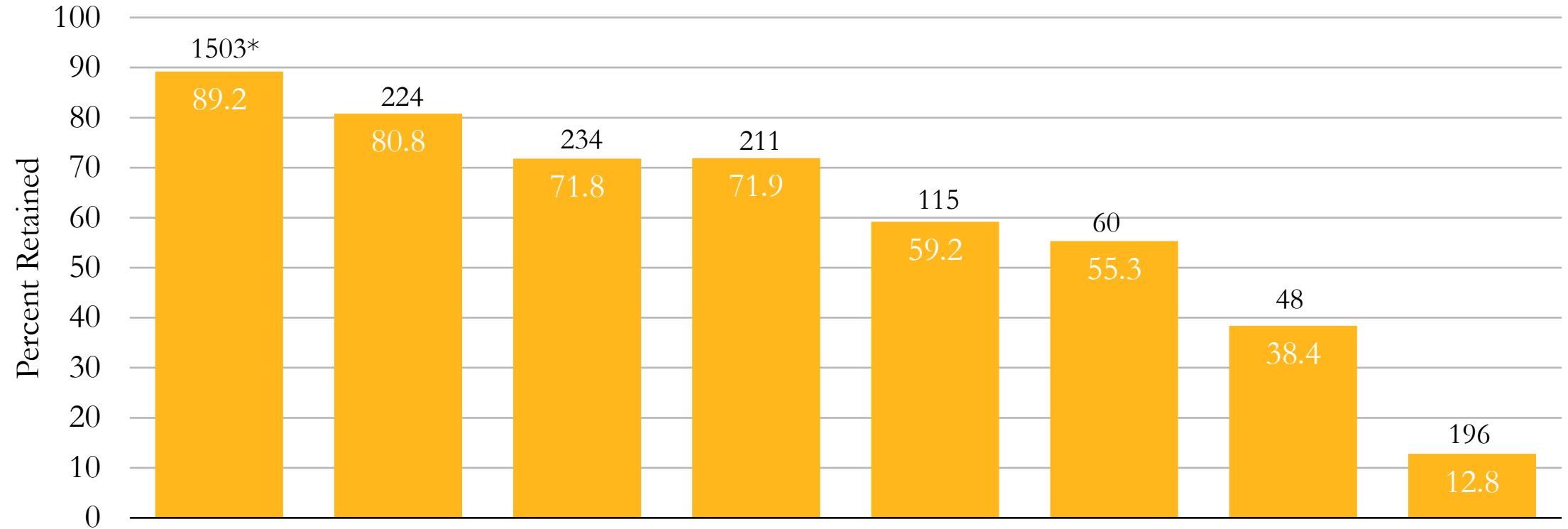
What our students do when they get here probably matters more for their success than any other factor.

**FRESHMEN THIS WAY**  
**#NAV1GATEUNCG**





## Second Year Persistence By First Year Hours F14 Cohort (n = 2,592)



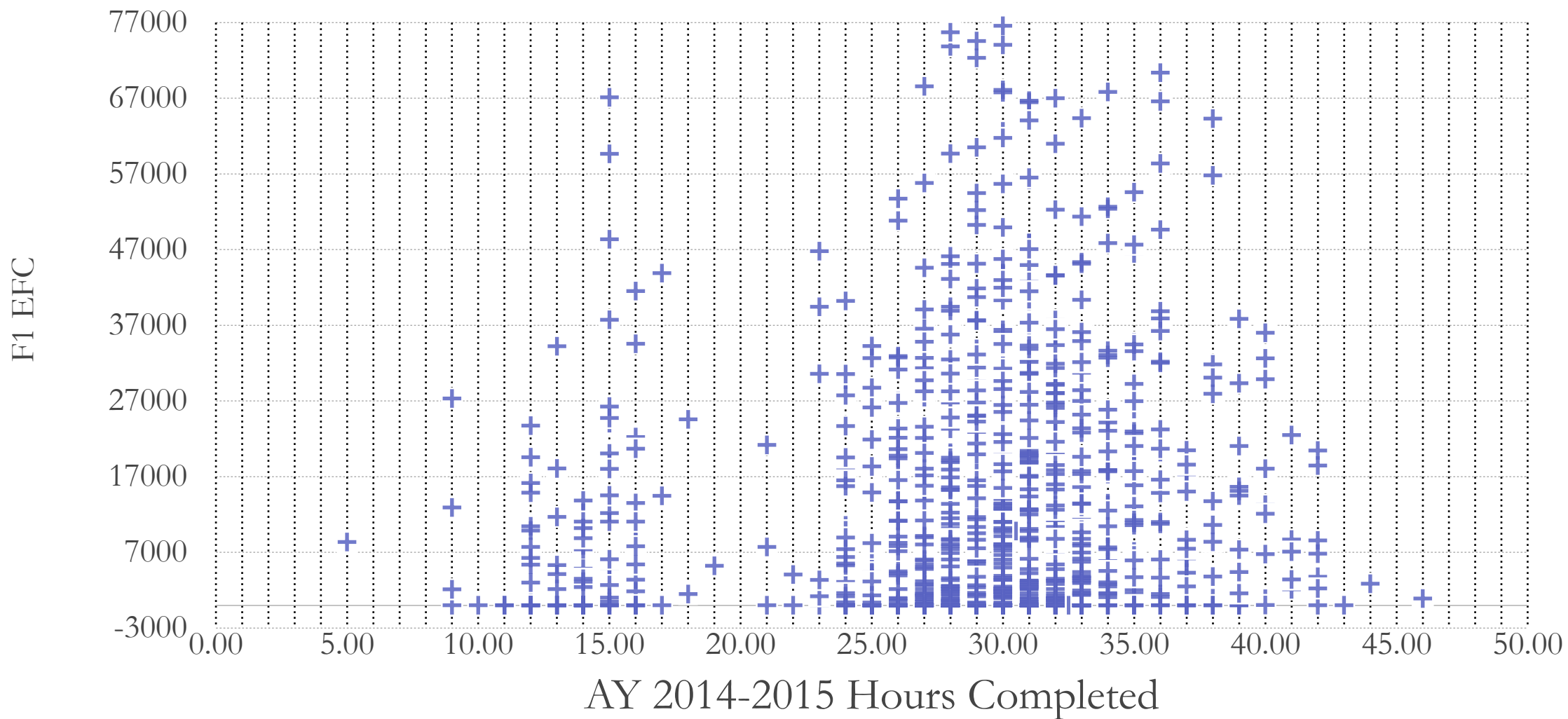
(‘Persistence’ here is any enrollment in the fall of the second year.)

\*Of this group, 1,062 (70.6%) enrolled in >30 hours.



Find your way here

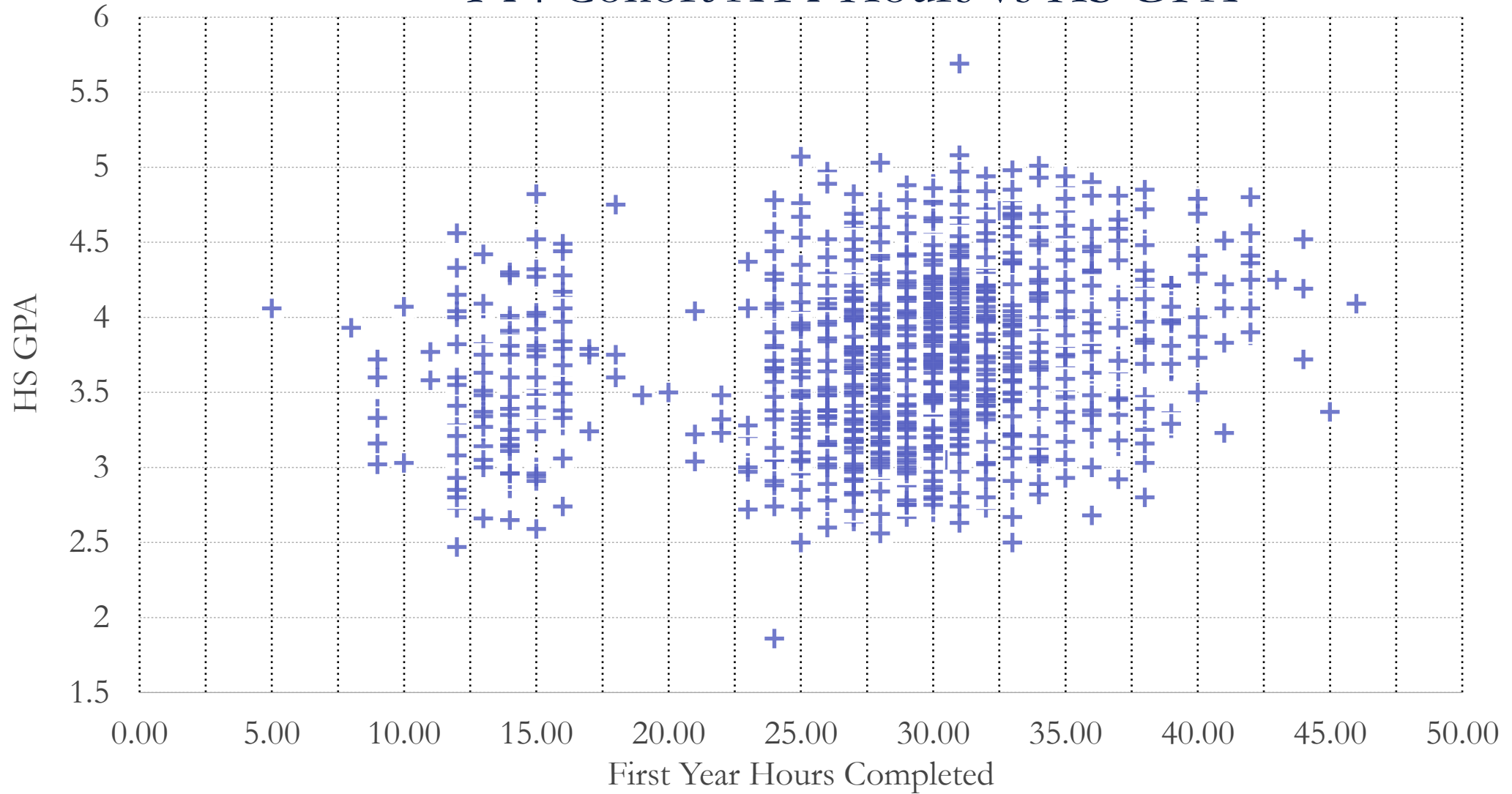
## F14 Cohort AY1 Hours vs F14 EFC





Find your way here

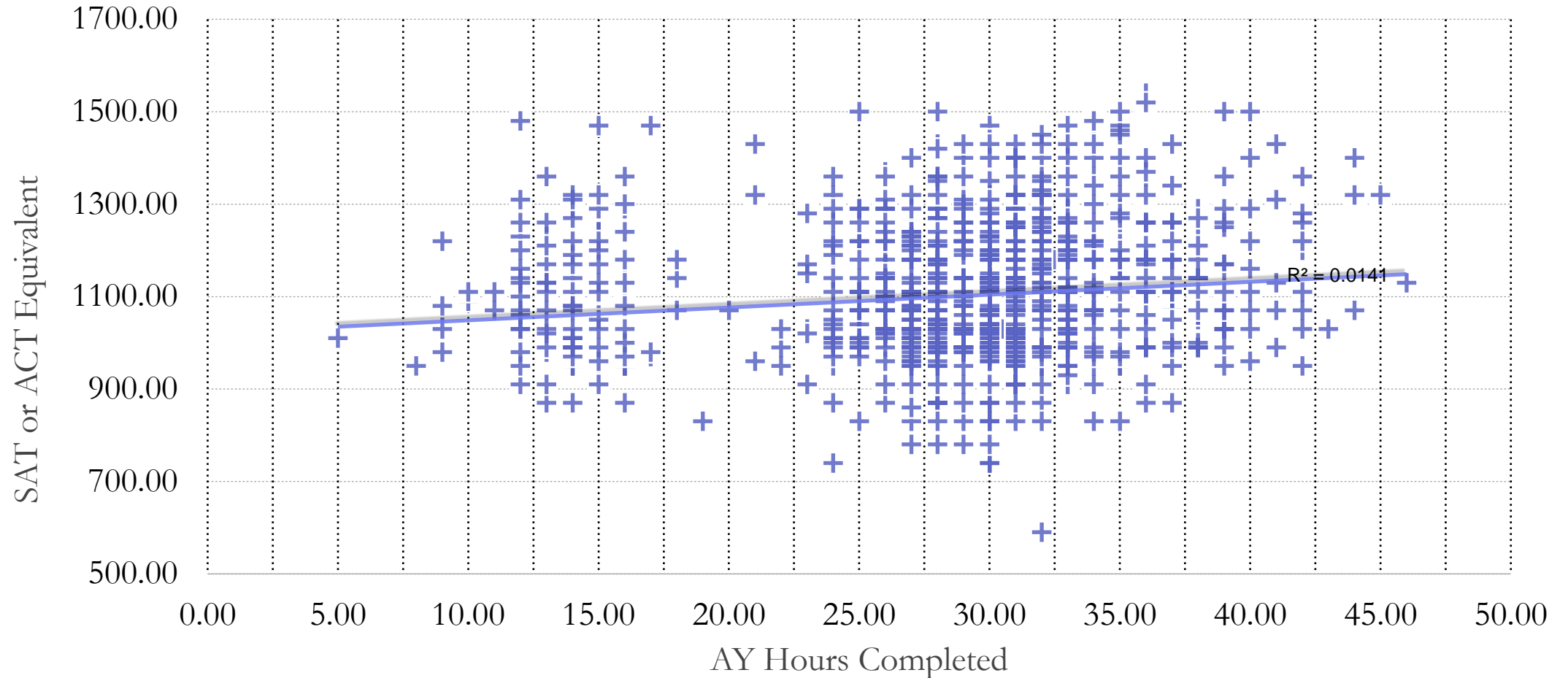
## F14 Cohort AY1 Hours vs HS GPA





Find your way here

## Fall 14 Cohort AY1 Hours vs SAT/ACT





*Find your way here*

# How Do We Get To 90/80/70?

Strategic Admissions (Admit to Retain)

Infrastructure for 30-Hour AY Completion

Improve Ratio of Hours Attempted/Hours Earned

Progress Toward Graduation Requirements

Address Big Obstacles: GPAs, DFWs, and Unmet Need

Improve Inter-Semester Retention Efforts

World-Class FYE, Including Gen Ed