



UNC  
GREENSBORO

*Find your way here*

Jim Coleman

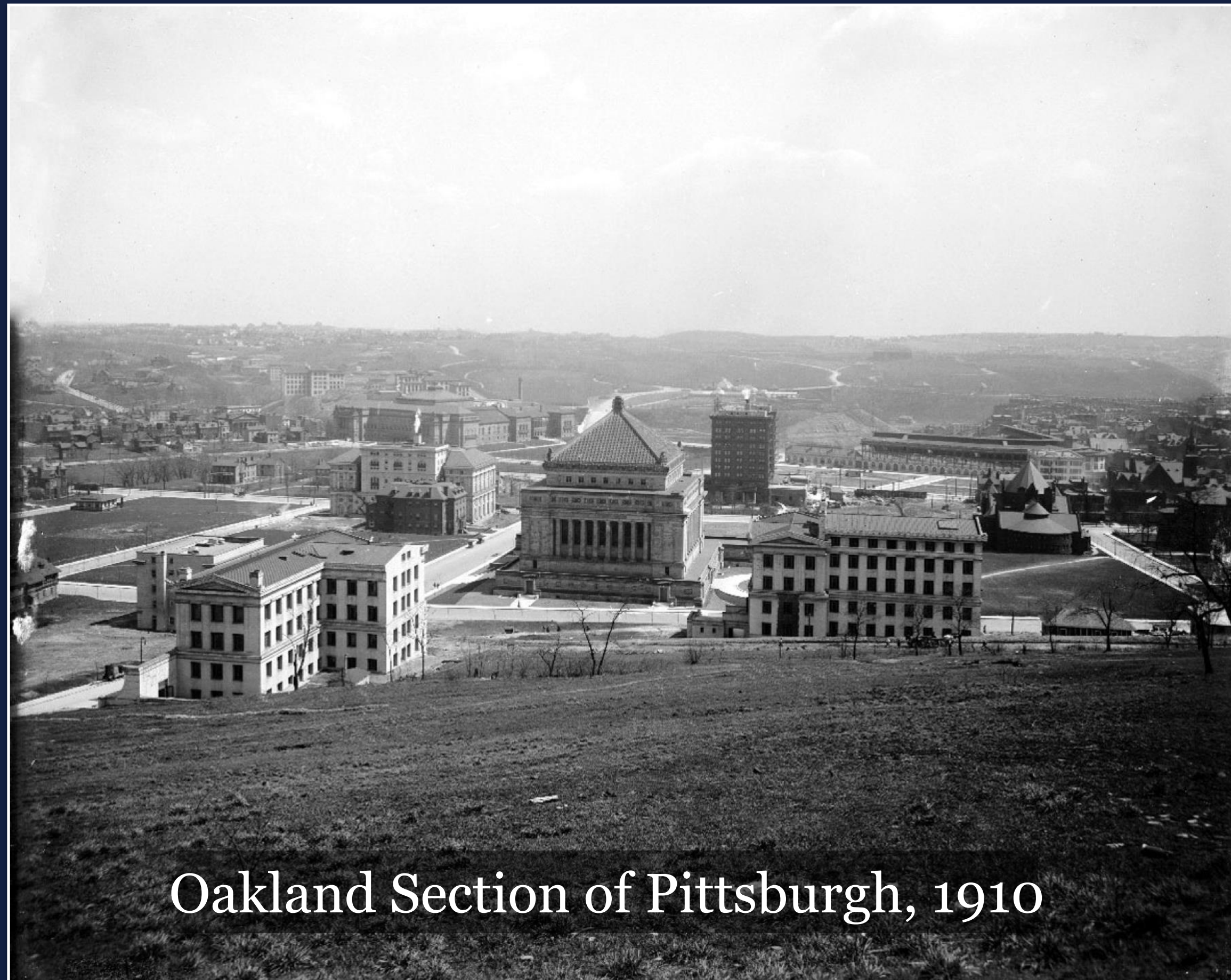
Provost and Executive Vice Chancellor

Taking on a provost role in the middle of a pandemic



# What Have I Learned About UNCG?

UNCG represents the best of the vision behind public higher education: *transformation.*



Top 25 nationally, #1 in North Carolina- US News social mobility ranking

# Our Faculty and Staff Truly Care About Students



## Grants to Support Disadvantaged Students Since July 1, 2020 (\$6.75M)

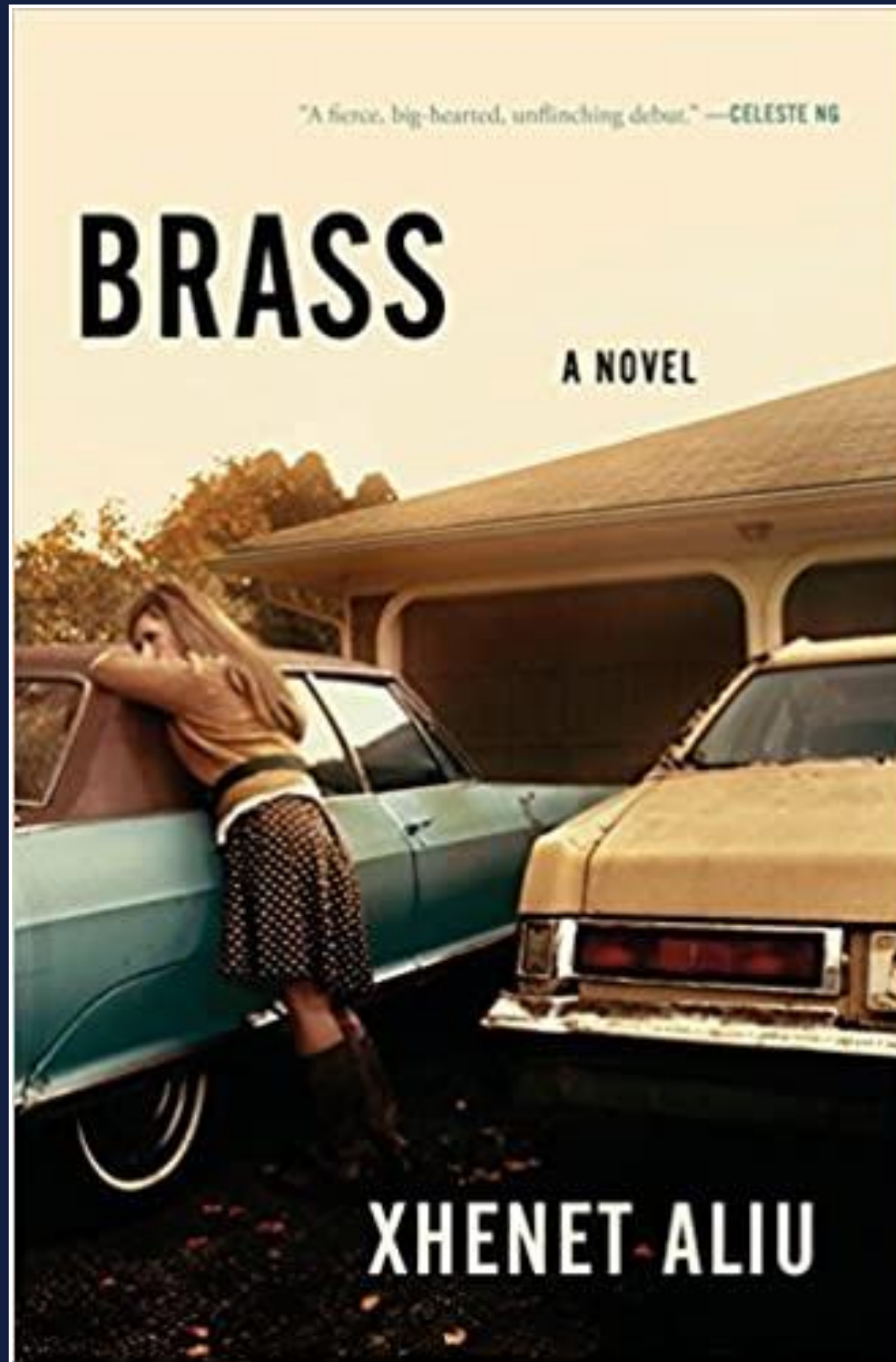
\$2.15M (HRSA)	Clinical Psychology students
\$1.00M (NSF)	STEM Careers and Grad School
\$345K (NSF)	Chemistry Pedagogy
\$300K (NSF)	Computer Science for High School teachers
\$1.4M (DoEd)	Low income, 1 <sup>st</sup> gen students
\$1.6M (DoEd)	Low income, 1 <sup>st</sup> gen, STEM
Waiting to Hear:	
\$3.16M (NIH)	Under-represented students into bio-medical research
\$1.0M (HHMI)	All students in STEM

# Our Faculty and Staff Truly Care About The Community



## Some Grants to Support The Community Since July 1, 2020

- \$1.54M Youth/families in welfare or justice system
- \$>300K Immigrants and refugees
- \$4.96M Assessment of Career and College promise community college program (continuing)
- \$6.58M Homeless children and youth (continuing)
- \$1.59M Finding, developing and keeping principals in rural schools (new)
- \$15.6M Low-performing schools, rural schools, equitable access to teachers and principals, student support and family engagement (continuing)
- \$201K Impact of student loans on transition to adulthood
- \$1.4M Access to literacy resources and libraries for Native American children and families.



## Significant New Competitive Research Grants Since July 1, 2020

- \$500K NSF CAREER (machine learning)
- \$ 36K NSF: One step COVID express test
- \$387K NSF: Food web complexity
- \$283K NSF: Theoretical Math
- \$447K NIH: Nanodots for treating heart disease
- \$637K DoD: Preventing brain damage from hypoxia
- \$1.6M NIH: anticancer drugs from fungi
- \$2.5M NIH- Reducing health disparities in Appalachia (with WFU)
- \$365K NIH- skin microbiomes and disease (UC Denver/UC San Diego)
- \$171K NIH- preschool STEM education
- \$1.1M NIH- finding potential pharmaceuticals from natural products with (UCSC and Simon Fraser)
- \$>1.0M NIH- preventing brain damage from metabolic stress

# Strong Students and Strong Programs

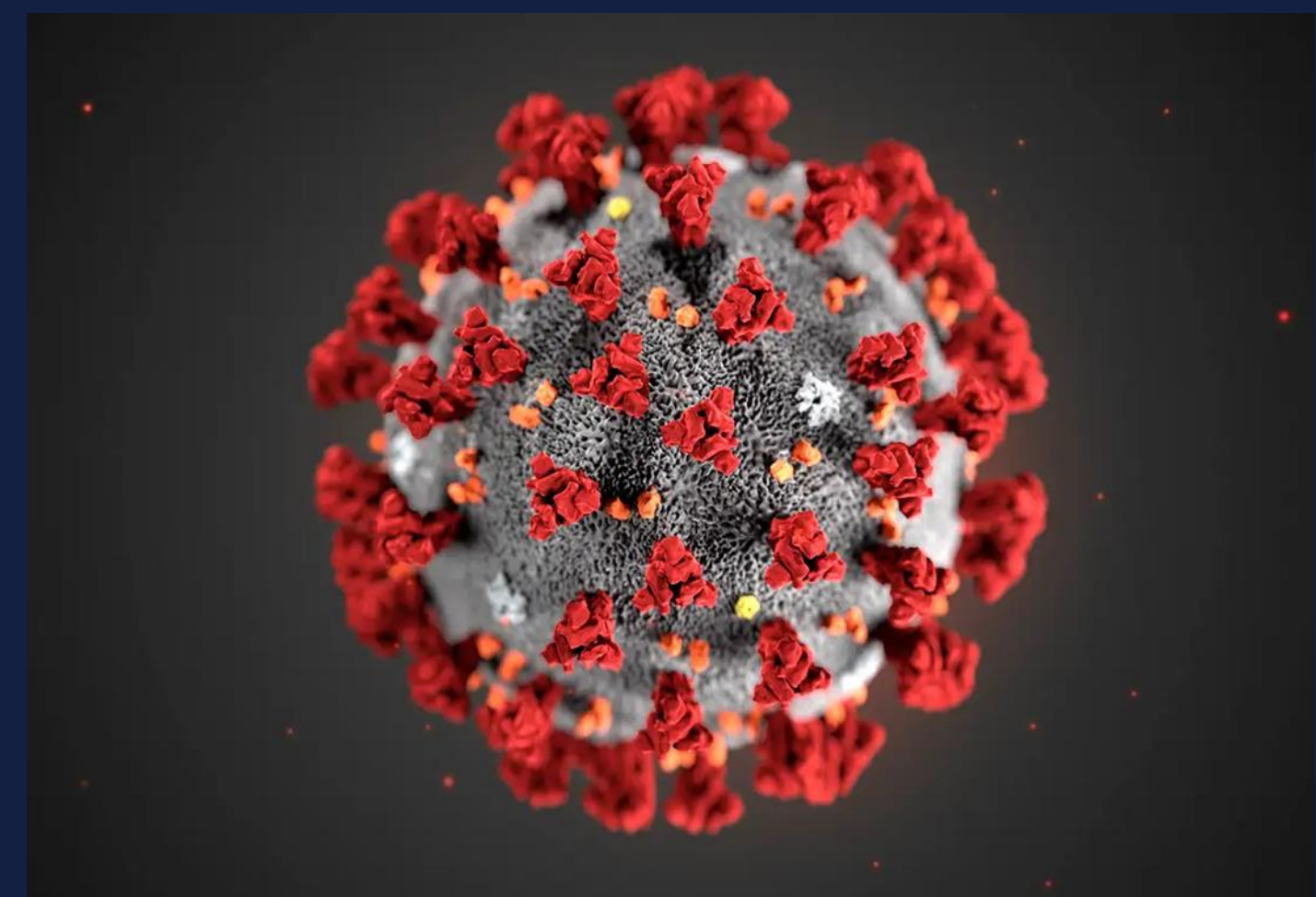


13 Gilman International  
Student Scholars — 37<sup>th</sup> in the  
US, 2<sup>nd</sup> in North Carolina

*US News*

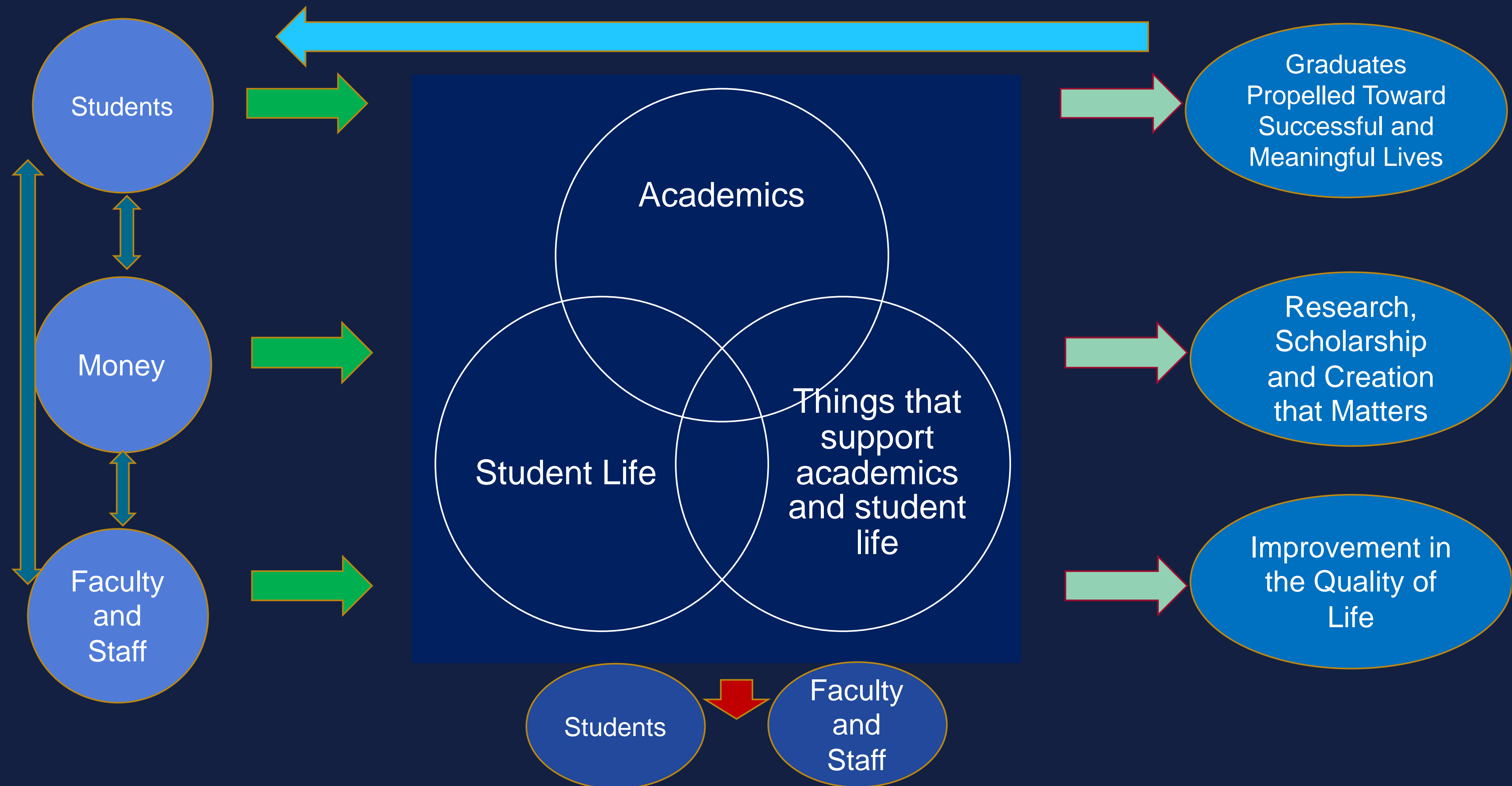
Counselor Ed #3  
Library and Info Science #22  
Nursing- MS and DNP top 50  
Speech Pathology — top 50

# Immediate Challenges That I've Found





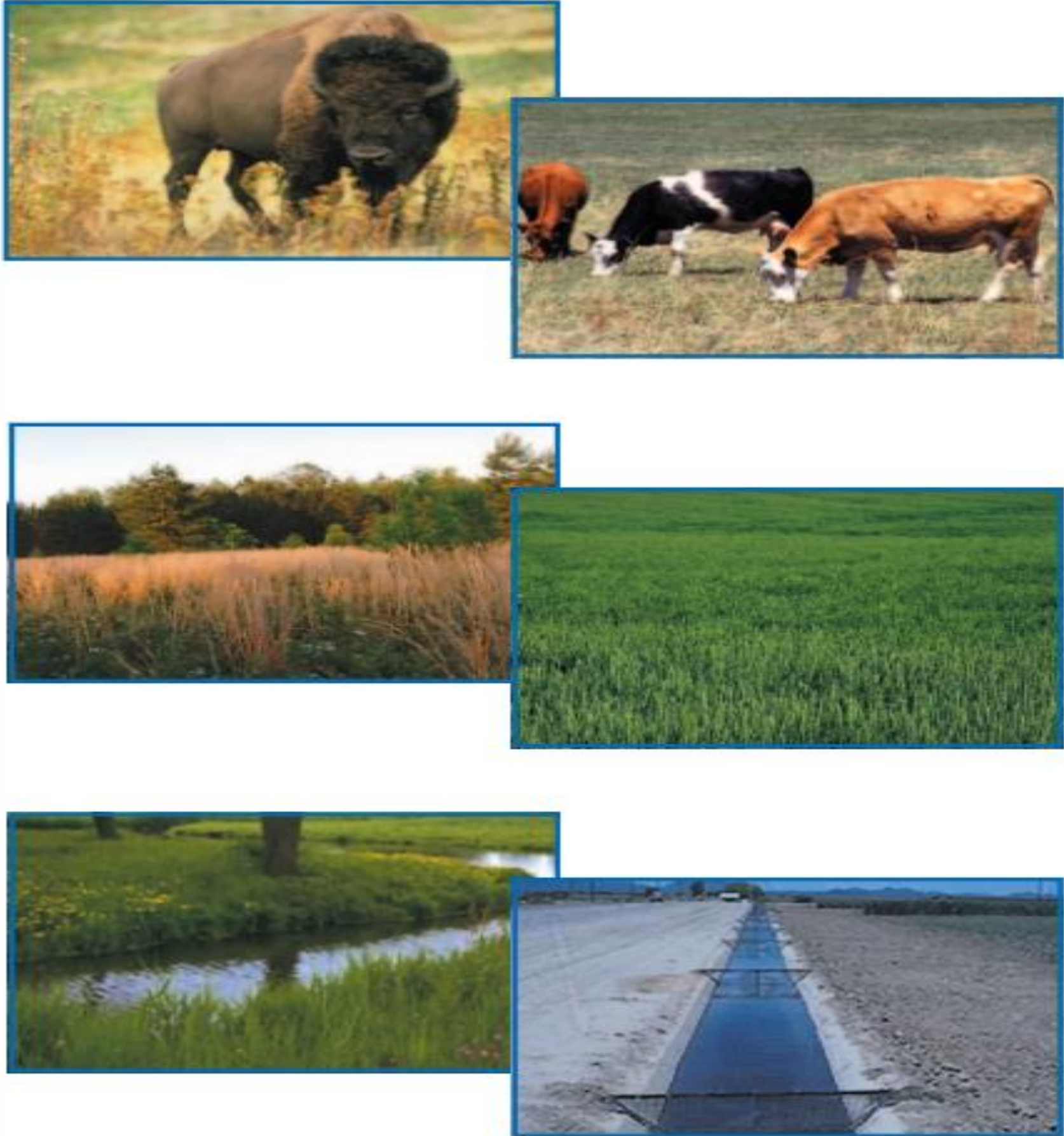
# How I Think About the University: Ecosystem Model



# Equity, Diversity, and Inclusion are Key to the Functioning of an Academic Ecosystem

**Issues in Ecology**  
Number 4, Fall 1999  
Published by the Ecological Society of America

**Biodiversity and Ecosystem Functioning:  
Maintaining Natural Life Support Processes**



# Two Key Items To Get Better

Integrated Student Success  
Plan and Culture

Energizing Innovative Curricular  
Analysis and Development





Summit

Northeast Ridge

West Ridge

Northeast Shoulder

70%

80%

90%

Ice Cliff

Cliffs

Changtse

North Col

Advanced Base Camp

4

3

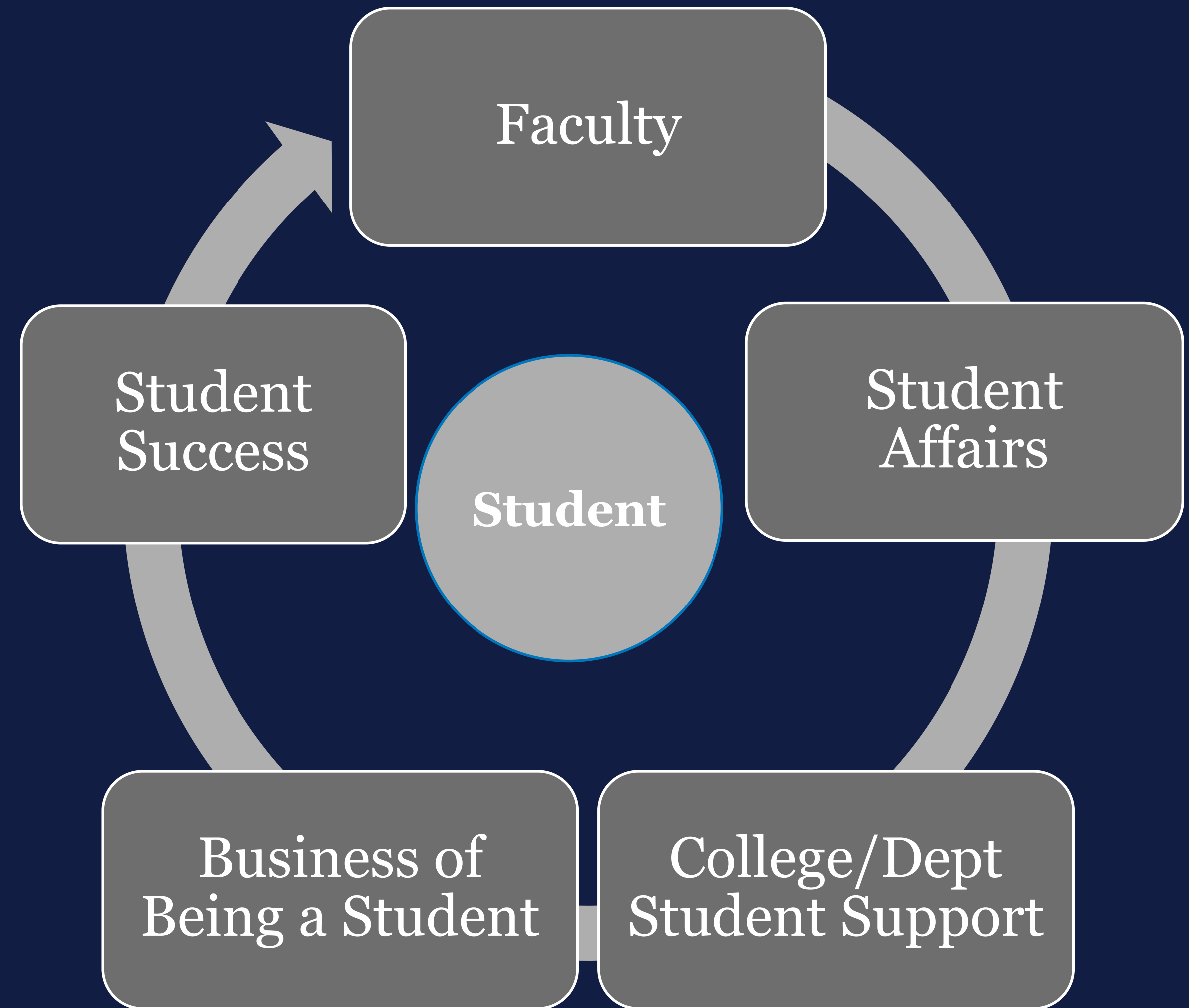
2

1

# Traditional Health Care Metaphor

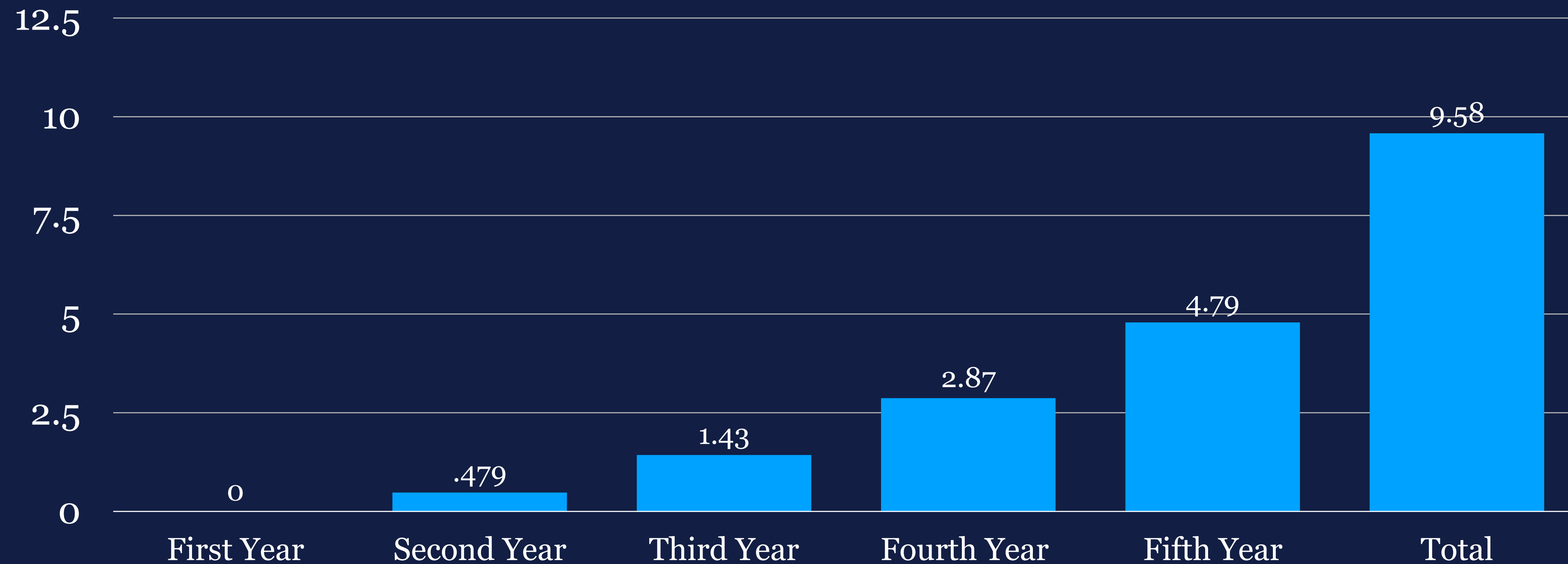


# Mayo Clinic Metaphor



# The Financial Case for the Importance of Student Retention

Revenue Impacts Over Baseline of 1% Increase Per Year In Retention For Four New Cohorts Over Five Years (In Millions)



The Fall 2019 cohort saw a 5% retention increase over baseline, returning 125 more students, which will bring ~1.25M in tuition and fees this year.



# Undergraduate Enrollments Are on the Decline Nationally

## Reason for Optimism: Growth in Adult Students EAB Analysis Using NES Data

### Growth in Students Age 25-34 2007-2017

15%

All Institutions

620k

Total Students

### Growth in Online-Only Students 2013-2017

47%

Public Four-Year

42%

Private Four Year, Non-Profit

### Growth in Master's Conferrals 2007-2017

25%

All Institutions

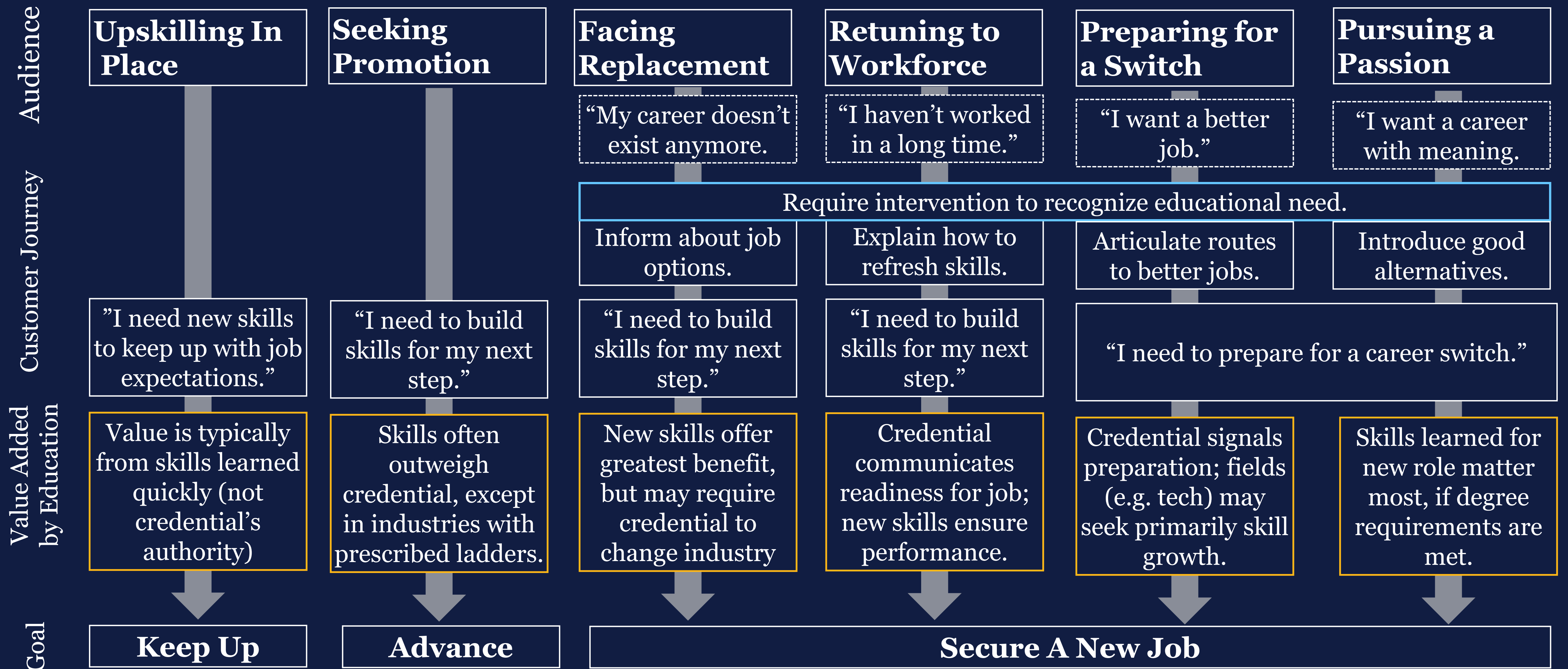
160k

Total Students

2026 Projected Growth in Age Group:  
**11%**

2026 Projected Growth Master's  
Degrees: **22%**

# Post Baccalaureate Pathways





# The Rise of the Professional Master's Degree

## Traditional

Full-Time, Residential

Thesis

Path to Ph.D.

Designed Around Faculty Research  
Interest

Taught by Tenure-Stream Faculty

Housed within a Single Dept.

Financial Aid Available

Younger, Less-Experienced Students

## Professional

Part-Time, Low Residence

Project or Work Experience

Path to Employment

Designed Around Employer Hiring  
Interests

Taught by All Faculty Types

Cross-Disciplinary/Multiple Departments

Typically Self-Pay

Often Older, with Work Experience



UNC  
GREENSBORO

*Find your way here*

Thank you.



# My Personal Journey on Racial Equity

