



**Meeting of the Full Board
April 11, 2024**

Discussion Item

BOT – 3 Jackson Library Design Development Update

Background Information

The Jackson Library opened in 1950, with the tower addition in 1973 and minimal updates since. The current facility is not reflective of the evolving definition of a modern-day library: a dynamic, technology-rich learning environment and intellectual community hub. Growth in enrollment, new academic programs, and library support activities have generated a need to increase programmatic space and make it critical to renovate the existing areas. The planned revitalization will innovatively and strategically support the University's institutional mission while enhancing and strengthening the library's connection to the heart of UNC Greensboro's main campus.

Jackson Library's addition and renovation project scope will consist of a comprehensive, transformative renovation to the existing building and new addition. This project will update the existing mechanical, electrical, plumbing, life safety, and audiovisual systems. ADA issues and an IT Core Distribution Facility issue will also be addressed. Located on the bustling hub that is the physical center of campus, the project is envisioned as a complex, phased construction of an occupied building. The project will integrate high technology group studies, central convening spaces, and increased capacity for use by individual students. It is envisioned as a nexus of student academic success and transformative research resources. The library is considered the core of the University's intellectual space, fostering learning, knowledge creation, and community.

The project Design Team will discuss the guiding principles informing the project and outcomes of stakeholder engagement, and share design elements and schematics.

Attachment:

3.1 Jackson Library Design Development Presentation

UNCG

Jackson Library Renovation

Board of Trustees

April 11, 2024

LS3P + SHEPLEY
BULFINCH

Agenda

1. Introduction
2. Process and Schedule
3. Re-Imagined Jackson Library
4. Clarifying Questions

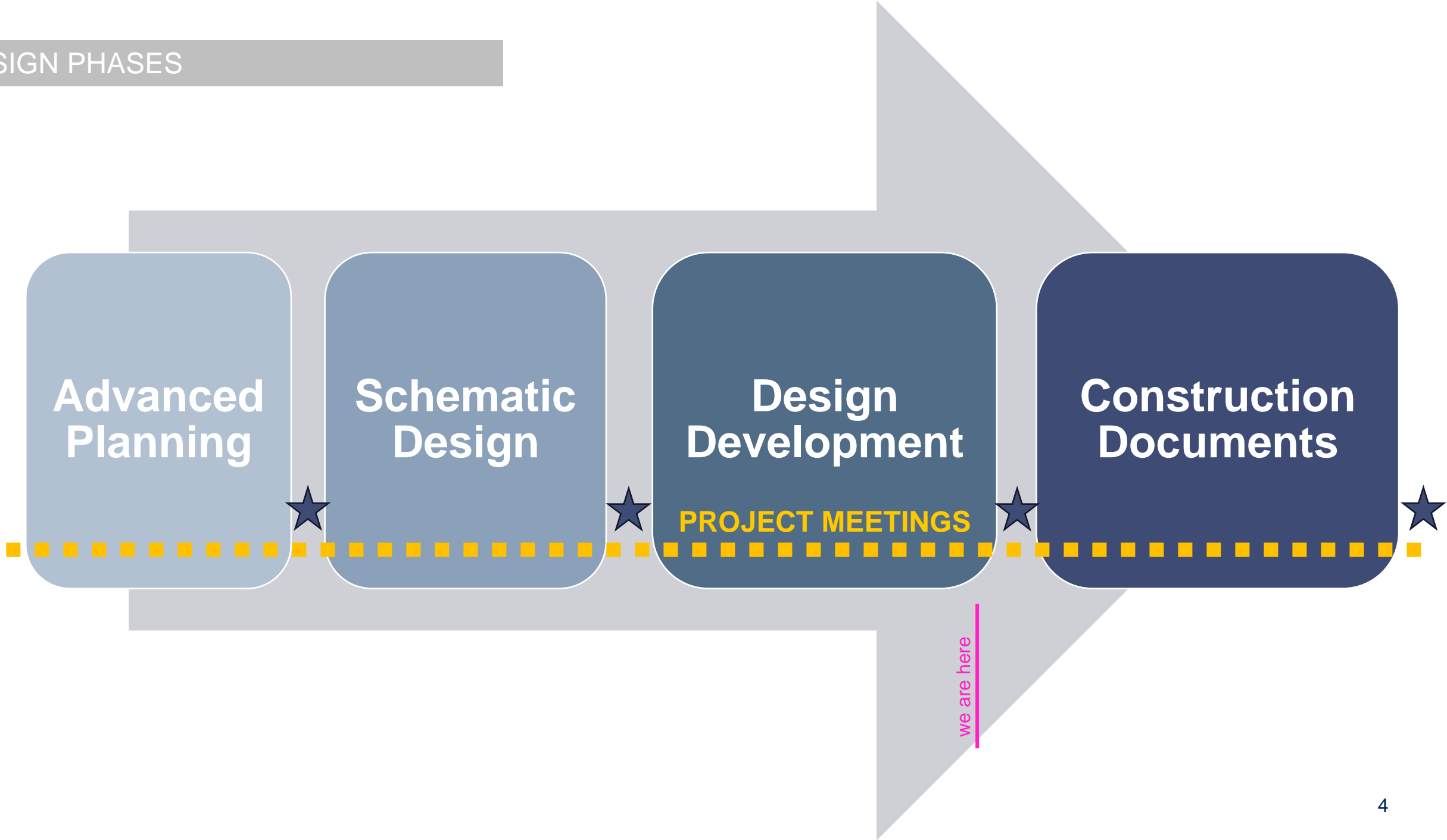


Process and Schedule

Jackson Library Renovation

LS3P + SHEPLEY
BULFINCH

DESIGN PHASES



DESIGN

Design Development: ~ 5 weeks (Early **April 2024**)
Construction Documents: 5 months (End of **Sept. 2024**)
Bidding: 2 months (Mid **January 2025**)

CONSTRUCTION

>>> *Move Dec '24 – Jan.'25*

PHASE 1 - West 1970's: 17 Months from **Feb. 2025 - June 2026**

>>> *Move July '26 – Aug.'26*

PHASE 2 - East 1950's: 15 Months from **Sept. 2026 - Nov. 2027**

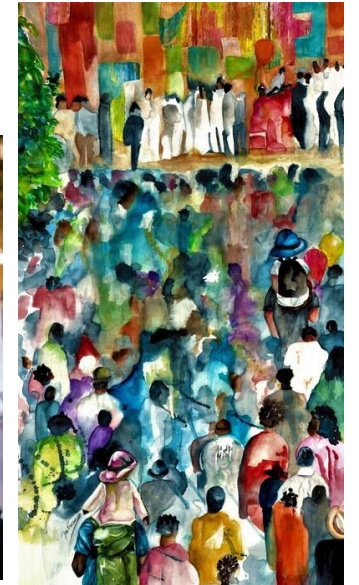
Re-Imagined Jackson Library

Jackson Library Renovation

LS3P + SHEPLEY
BULFINCH

Guiding Principles

- Create a **welcoming and inclusive library** environment that reflects the inspiring diversity of the UNC Greensboro community and fosters a sense of ownership and belonging.
- Leverage space and technology to **foster innovation**, promote **interdisciplinary collaboration**, and empower students of all academic levels to reach their highest potential.
- Provide a collection of library partners that collaboratively establishes **student success** criteria and provides the tools for students to succeed.
- Provide strong and **diverse collections** that support the teaching, research, and learning needs of the institution.
- Develop an **integrated services** library model that establishes the Jackson Library as the heart of campus and serves as a **retention/recruitment** vehicle for students and faculty.
- Leverage the library to deepen the **connection with the community**.



Campus Engagement

Top Three Needs

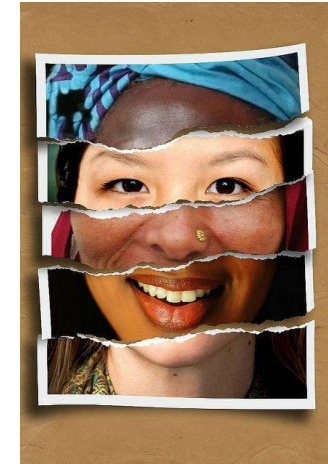
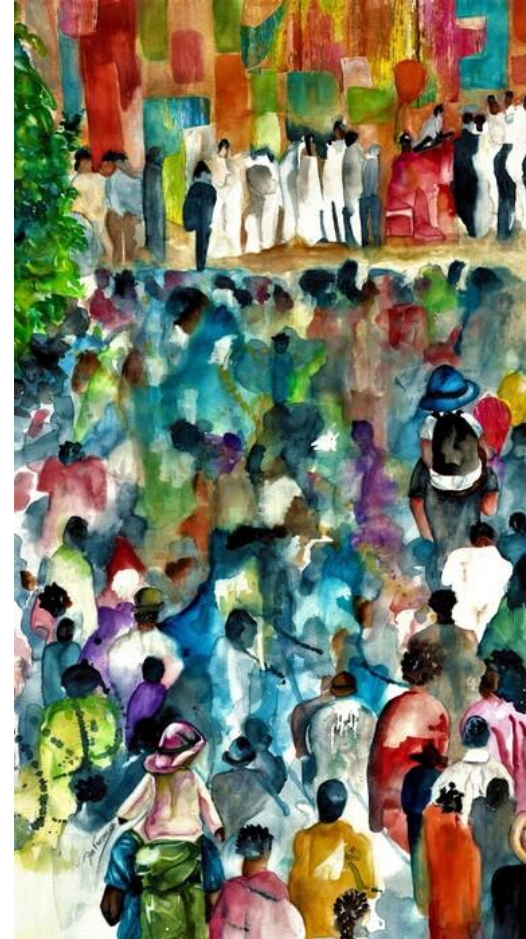
1. Coffee/Food
2. Stress Relief Activity Space
3. Indoor Plants/Natural Elements

Bottom Three Needs

1. Event Space
2. Lawn Activity Checkout
3. Family Group Study Room



Concept Drivers



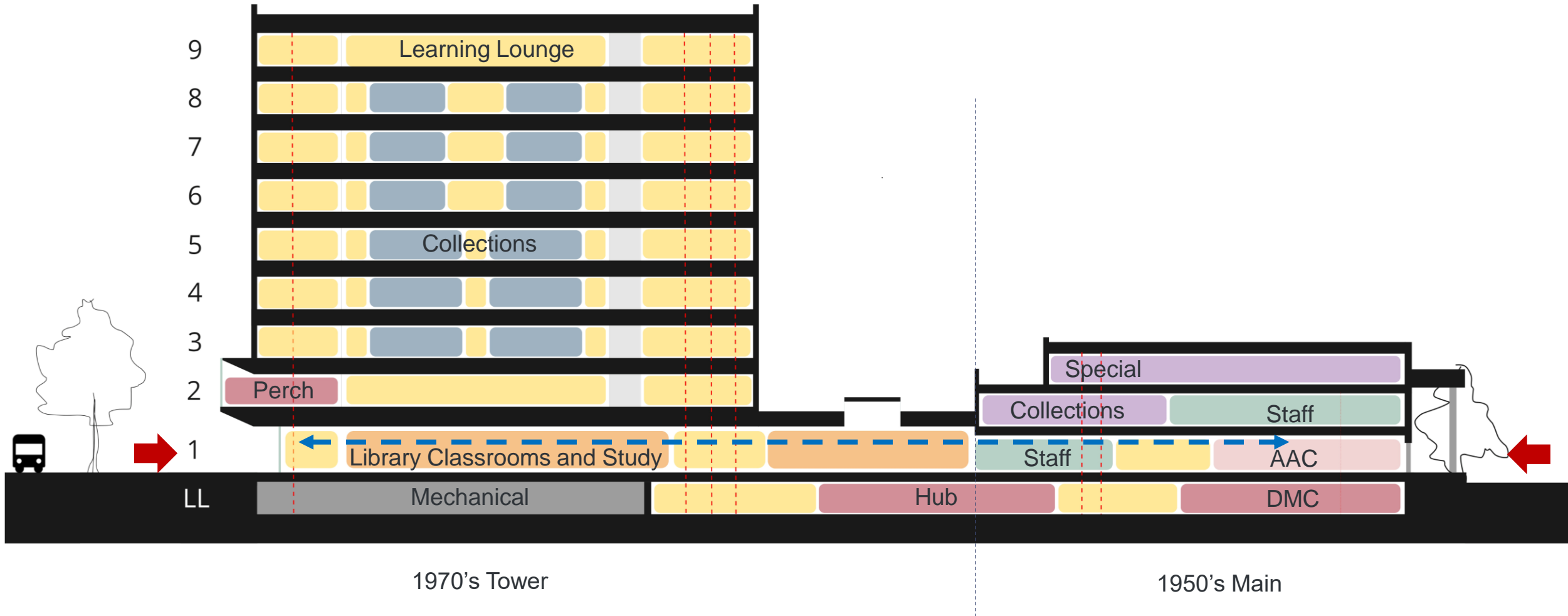
welcoming / inclusive / nurturing / playful / interactive / culturally rich / rooted / vibrant / innovative

Jackson Library Renovation Fast Facts

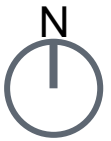
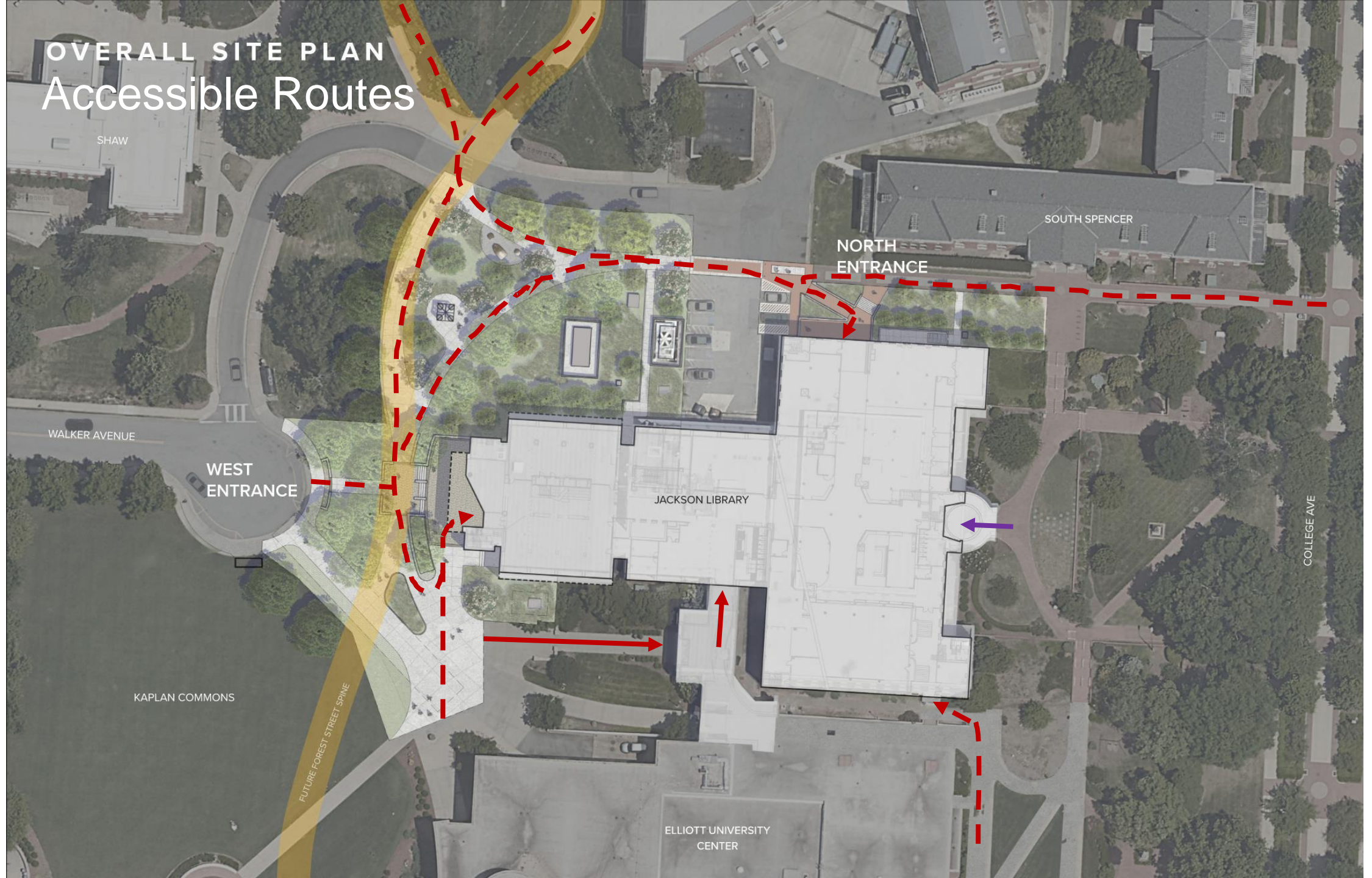
| | Current Total | Projected Post-Renovation Total |
|--|----------------------|--|
| Total patron space | 36,901 square feet | 73,429 square feet |
| Student seating capacity | 1,200 students | 2,250 students |
| Library teaching space | 5,943 square feet | 7,236 square feet |
| Enclosed/Semi-Enclosed student study space capacity | 253 students | 485 students |
| Student-focused wellness space | 0 square feet | 840 square feet |

All numbers are taken from the UNC Greensboro Jackson Library Addition + Renovation Advanced Planning Report, available upon request

Building Organization



OVERALL SITE PLAN Accessible Routes



OVERALL SITE PLAN Major Elements

New Accessible Glass
Entrance At L1

New Accessible Glass
Entrance at LL

- Accessibility and Code Updates
- Mechanical / Building System Upgrades
- Interior refresh of all student spaces

New Open Stair Connection Between
Level 1 and Level 2

New Accessible Elevator

Existing Tower Elevators Refresh





West Entry Coming from Moran Commons



West Entry Coming from EUC



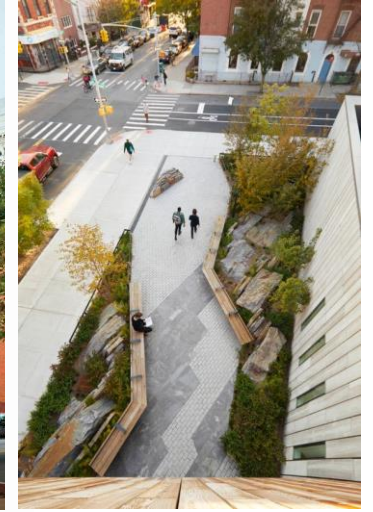
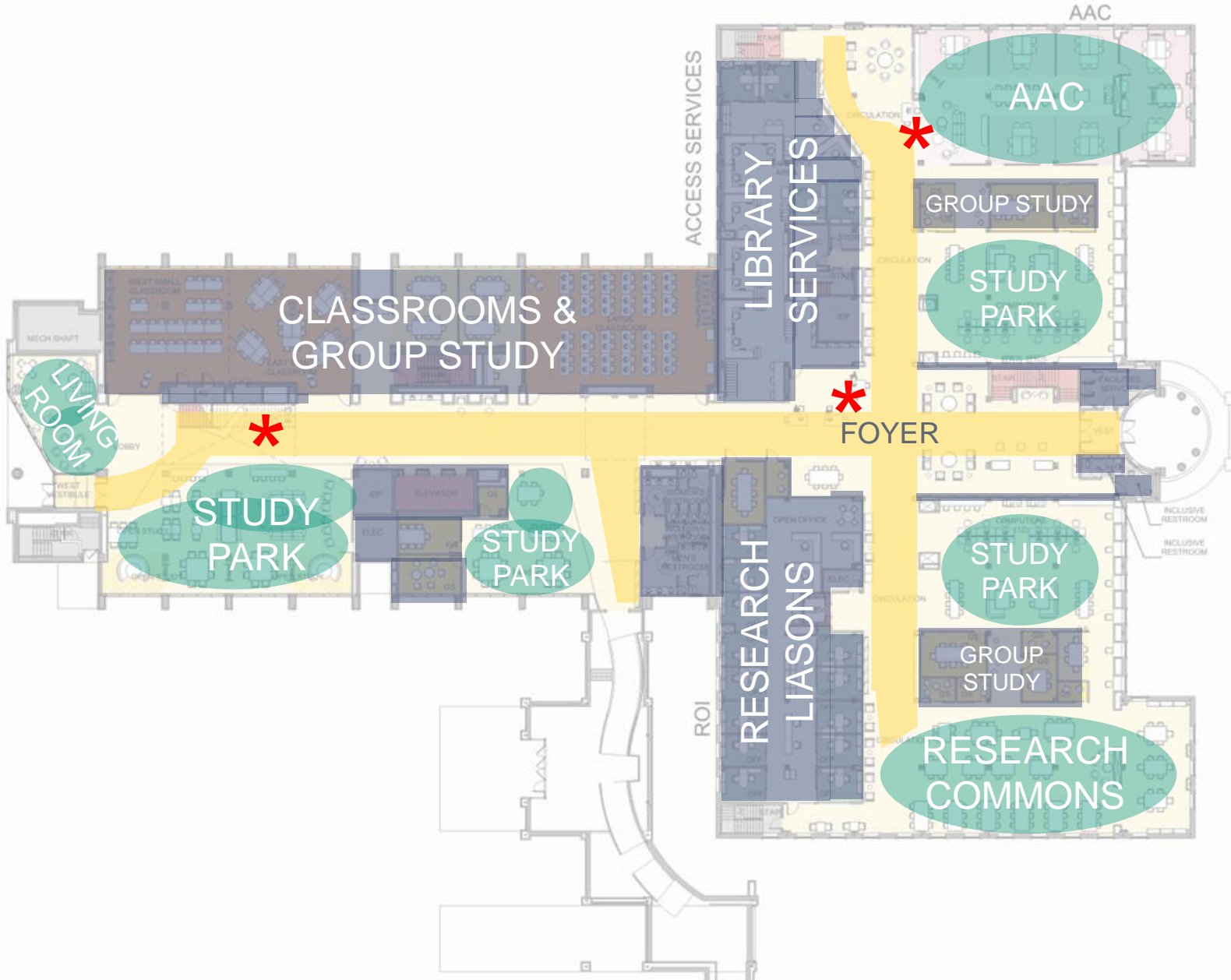
Walter Clinton Jackson Library

West Entry

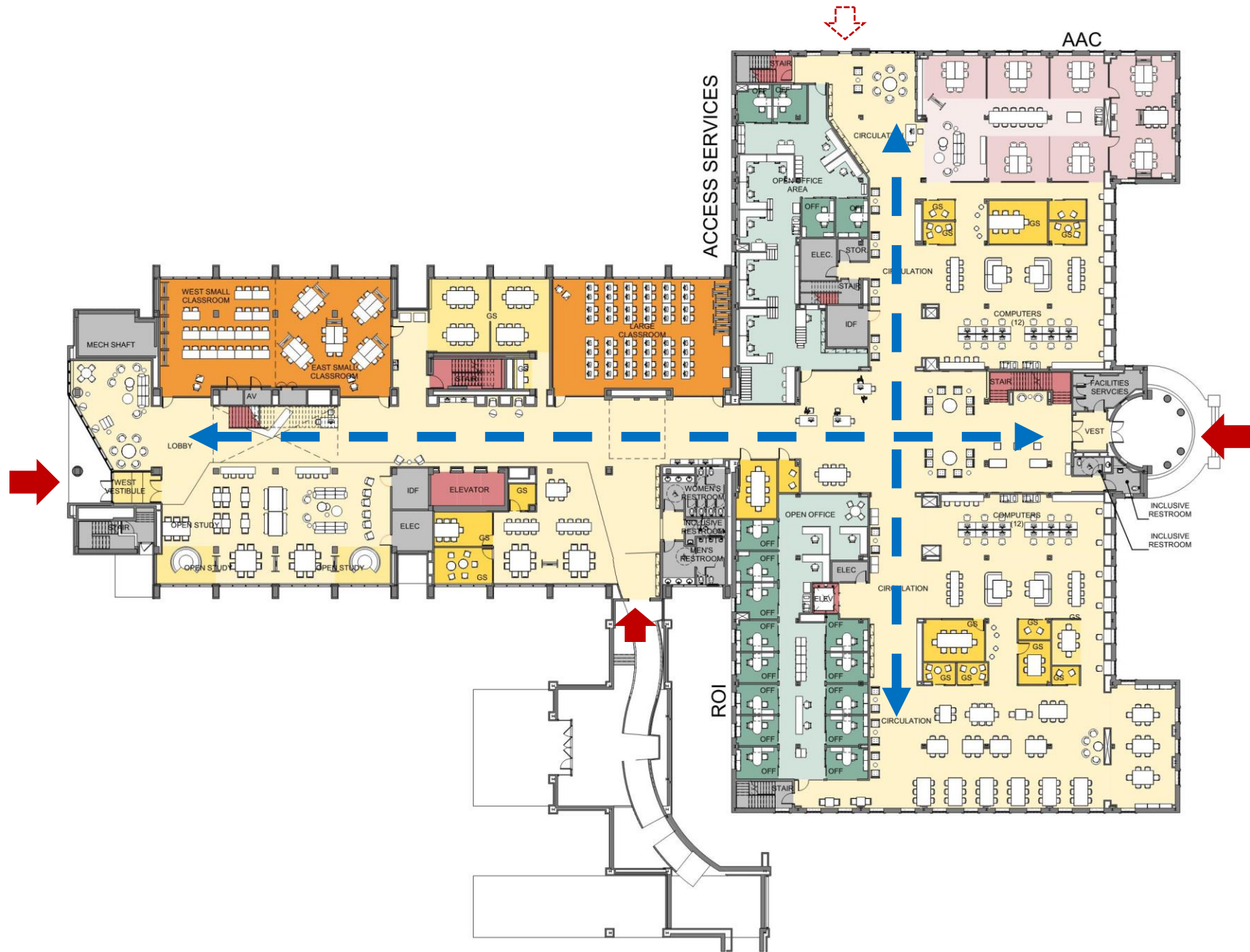


West Entry – Alternate Tower Glazing

Boulevards | Street Edges | Pocket Parks

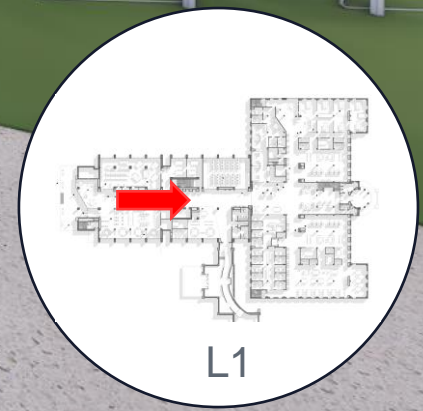


Level 1





Inside West Entry Looking East



L1



Existing



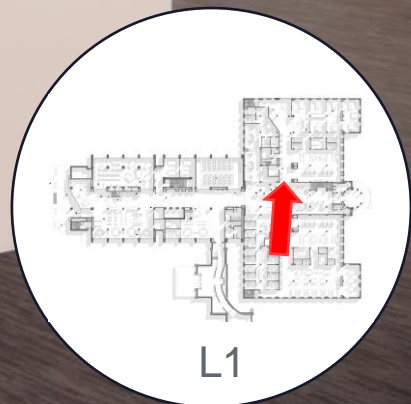
College Ave Entrance at Existing Stair



Grand Hall Coming from College Ave Entrance
Looking Toward West Entry

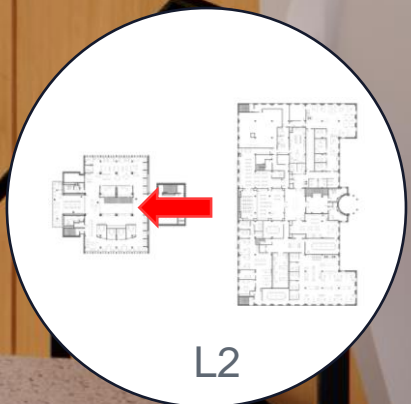


From Grand Hall Looking to North Entry

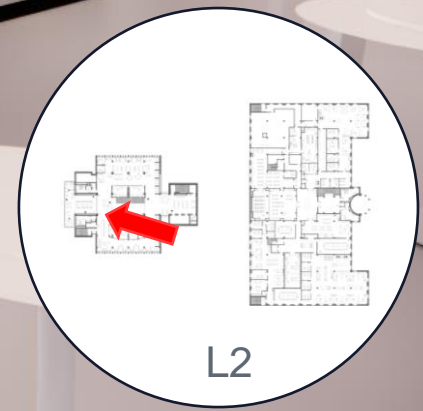




Top of Monumental Stairs Looking Toward Perch



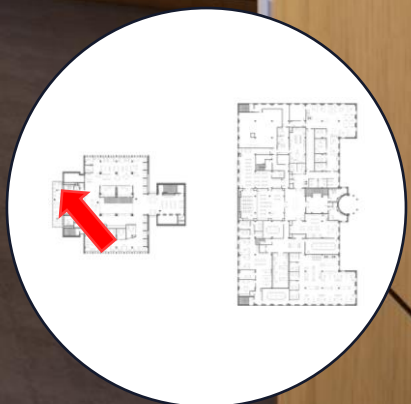
Looking into the Perch



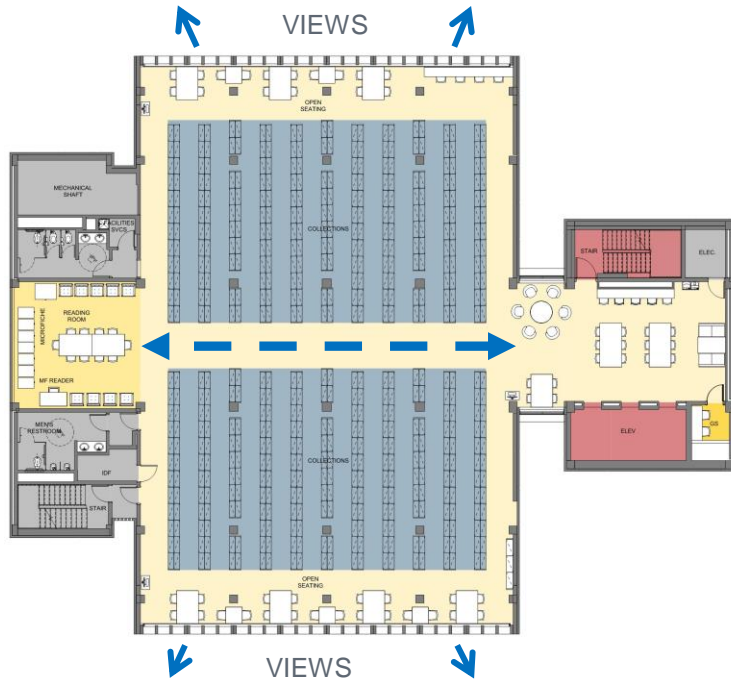
L2



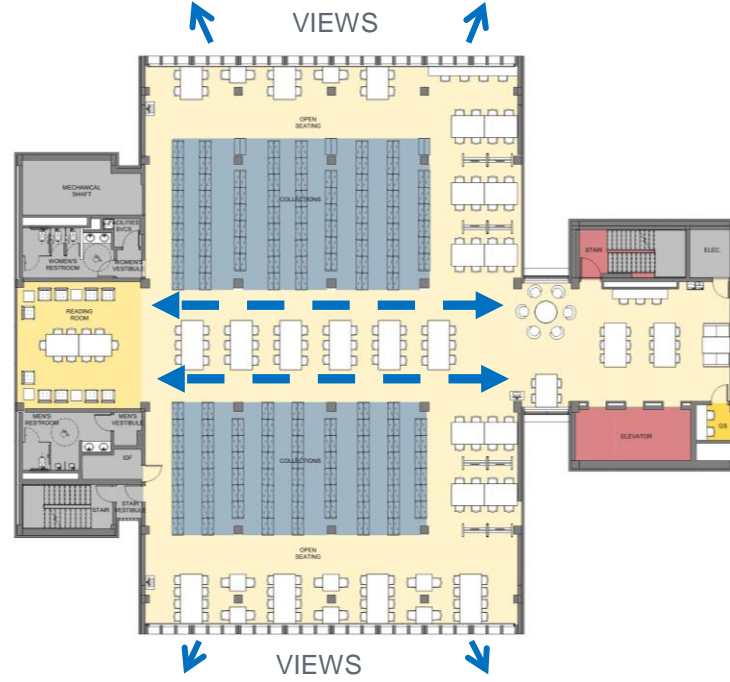
Inside Perch Looking Out



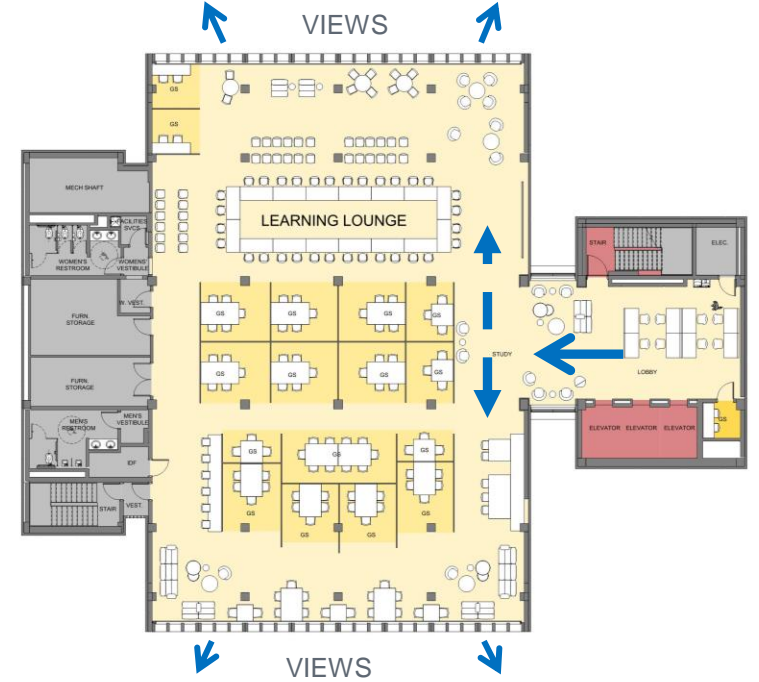
Tower Floors



Typical Dense
Stack Floors

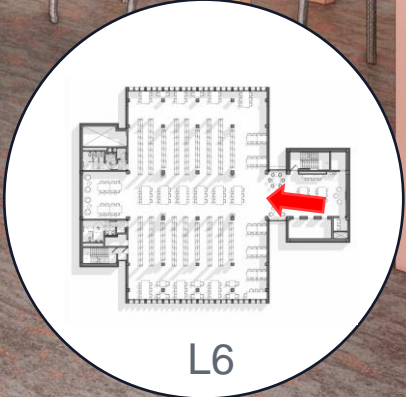


Typical Focus
Study Floors



Level 9
Learning Lounge

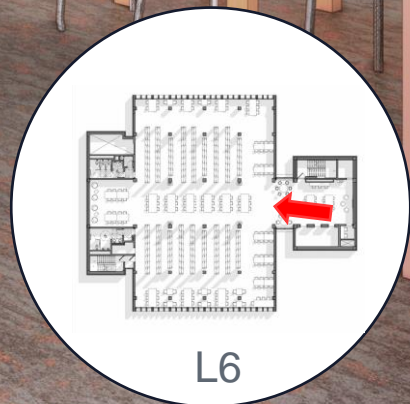




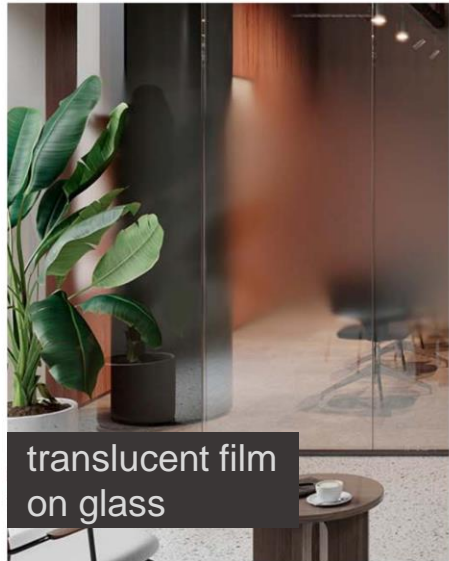
Less Dense Stack Floors



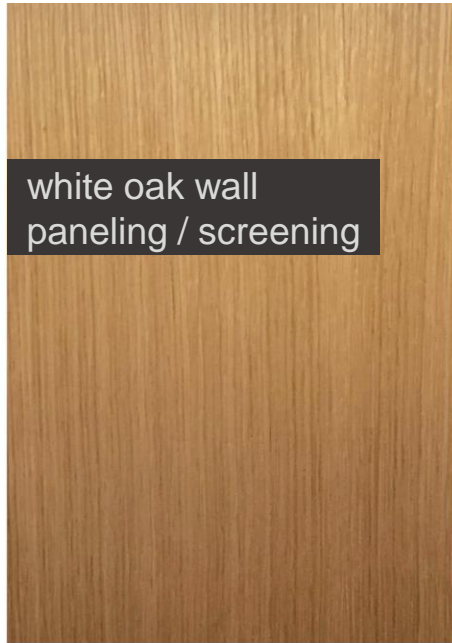
Less Dense Stack Floors –
West Glazing Alternate



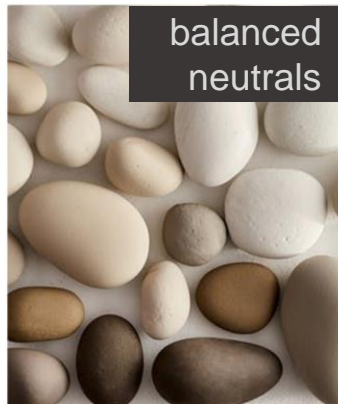
Overall Aesthetics – Public Circulation Experience



translucent film on glass



white oak wall paneling / screening



balanced neutrals

existing marble and brass



dark bronze new metal finish



large-scale graphics



existing terrazzo & new terrazzo tile



feature ceiling



curated moments



sophisticated-yet-playful / organic / graphic / authentic / approachable / layered

Overall Color Story

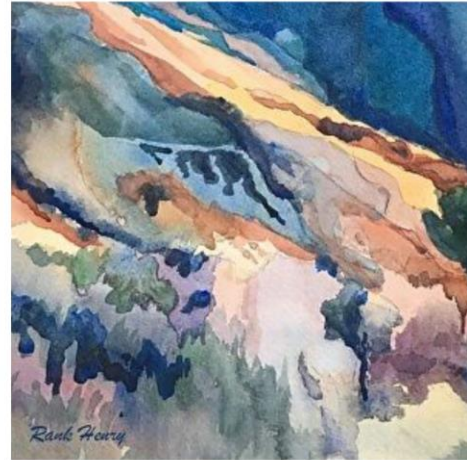


Balanced Neutral
Canvas Throughout

Lower Level
Saturated /
Vibrant



Levels 1 & 2
Earthy /
Rich



Levels 3-5
Cool /
Soft



Levels 6-8
Warm /
Soft



L9



UNC
GREENSBORO

Complimentary to Branding Colors



North Entry Coming From College Ave



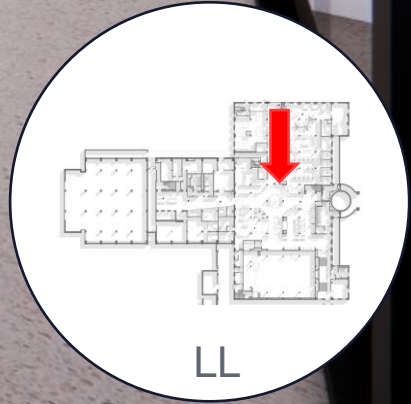
North Entry Coming From Moran Commons

Lower Level





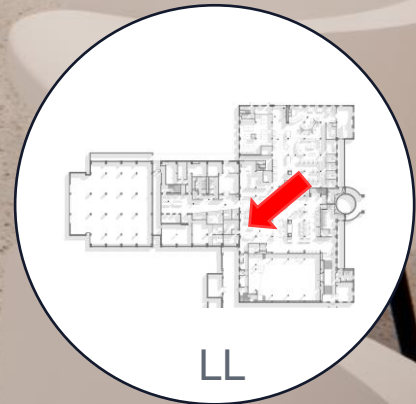
Inside North Entry Looking Toward DMC



Lower Level



Hub Coming from North Entry



Thank You!

Jackson Library Renovation

LS3P + SHEPLEY
BULFINCH